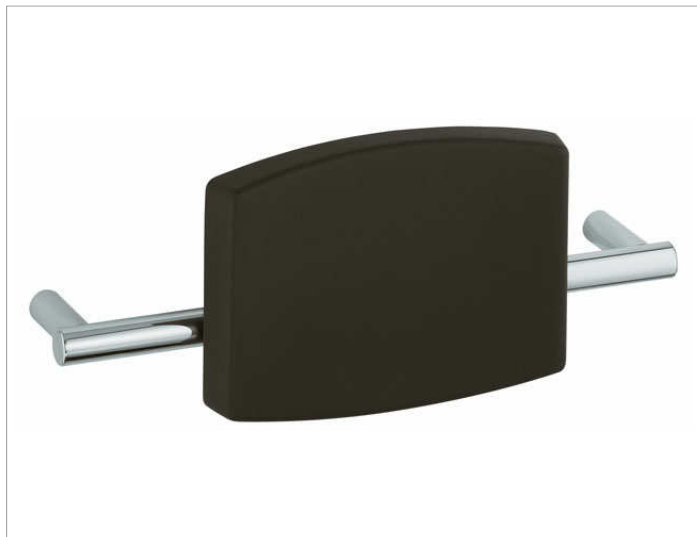


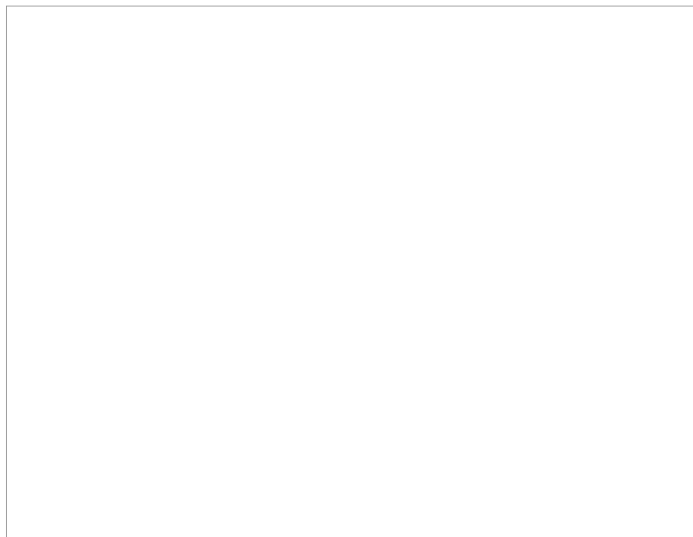
Plan Care

34979000037 Спинка для сиденья

ИЗДЕЛИЕ



ЧЕРТЕЖ



ОПИСАНИЕ ИЗДЕЛИЯ

для навешивания на настенную штангу

поверхность

темно-серый (RAL 7021)

спецификации

KEUCO PLAN CARE back rest 34979000037
ergonomic back rest made from high quality polyurethane
to clip into wall-mounted bar, cat-no 34979
the dark-grey (RAL 7021) back support is 250 mm high, 350 mm wide
projection including wall-mounted bar 168 mm
the bar is discretely wall-mounted with the provided anti-corrosion
mounting set

the wall-mounted bar has to be ordered separately!